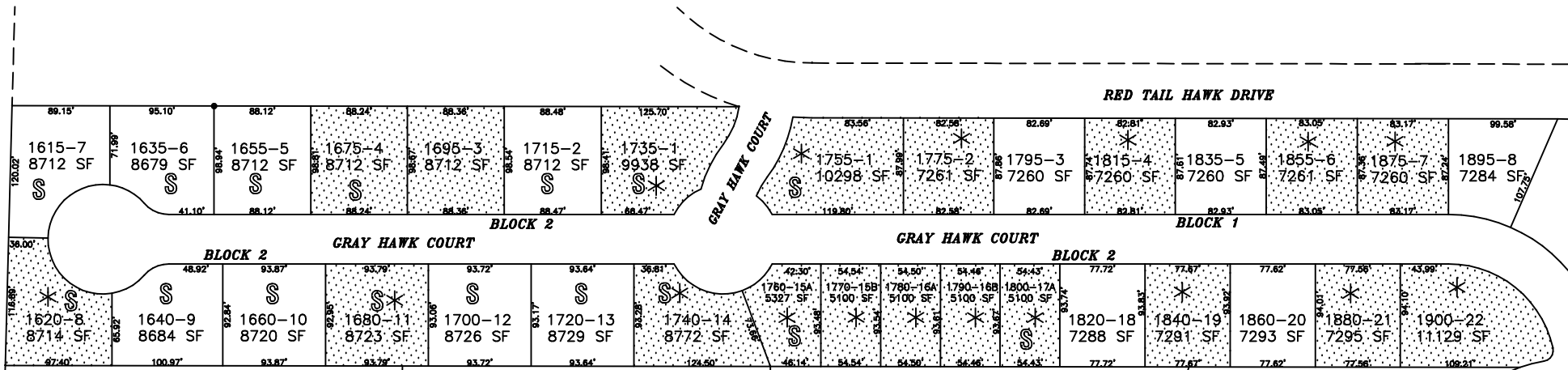


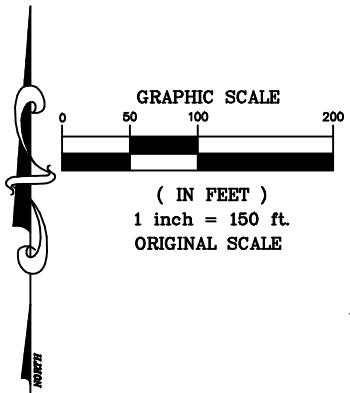
THE NEIGHBORHOOD

LOCATED IN THE NW1/4 OF SECTION 20, T5N, R72W OF THE 6TH P.M.,
LARIMER COUNTY, COLORADO



TWO STORY HOMES ARE ALLOWABLE ON
LOTS 3 AND 4, BLOCK 2 &
LOTS 15A, 15B, 16A, 16B, 17A, 18, AND 19, BLOCK 2

ALL OTHER LOTS ARE TO BE ONE STORY, WITH OR
WITHOUT WALK-OUT LOWER LEVELS



* INDICATES "ATTAINABLE" LOT DESIGNATION

1755-1 10298 SF INDICATES ADDRESS - LOT NUMBER
AREA OF LOT IN SQUARE FEET

§ INDICATES SOLD OR UNDER CONTRACT

REFER TO THE FINAL PLAT OF RECORD FOR LOT DIMENSIONS

© ESTES PARK SURVEYORS & ENGINEERS, INC. 2009

ESTES PARK SURVEYORS & ENGINEERS, INC. 1885 SKETCH BOX LN. #6 ESTES PARK, COLORADO 80517 (970) 586-5175 (970) 577-0381 FAX	
PROJECT: THE NEIGHBORHOOD	
DRAWN BY: PMK	CHECKED BY:
DATE: JUNE 16, 2009	PAWNEE MEADOWS, LLC
REV:	1885 SKETCH BOX LN. #6
REV:	ESTES PARK, CO 80517
	(970) 586-5175
SHEET: 1 OF: 1	PROJECT NO: 3315